



✓ spun steel fan housing with durable powdercoat finish

✓ sound-attenuating ducted design

✓ strong & lightweight riveted aluminum casing

✓ uber-efficient electronically commutated fan motor

✓ dual motorized, insulated doors

✓ high-flow, low-noise cube-core grille (not shown)

# The most efficient on the market

## Efficient

Never before could you get this much airflow with such little power draw. The 2.5e WHF consumes only 44 watts on low speed while moving 1510 cfm. That's an efficiency of over 35 cfm per watt. Wow.

## Quiet

Engineered using noise-reduction strategies including acoustic ductwork, cube-core grille, and perforated doors with sound-absorbing insulation, the 2.5e is great for unobtrusive night-time operation.

## Sealed

Motorized, automatic insulated doors close tight to ensure an airtight seal and thermal barrier between the living space and attic whenever the fan is not running.

## Optimized for...

- Maximum airflow on high speed for quick cooling on the spot.
- Maximum efficiency and minimal noise on low speed for pre-cooling the home throughout the night.



# 2.5eWHF

|                          |                  |
|--------------------------|------------------|
| airflow (cfm)            | 2536/1530 hi/low |
| power (watts)            | 197/44 hi/low    |
| efficiency (cfm/watt)    | 12.9/34.8 hi/low |
| insulation               | R-10             |
| acoustical (1m @ .45deg) | 50/37 dBA        |
| electrical               | 120VAC 3A        |
| rough opening            | 14.5" x 22.5"    |
| grille size              | 16" x 24"        |
| attic venting            | 5.0 SQFT         |
| shipping weight          | 104 lbs          |
| warranty                 | 3 years          |

*Due to our continual product improvement efforts, performance ratings and specifications are subject to change without notice.*

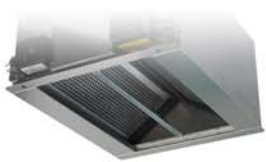
## Outstanding energy-efficiency

Using roughly 1/10th the electricity of A/C, an AirScape Whole House Fan can slash your energy bills while providing fresh, natural cooling. Many customers find their investment pays for itself much more quickly than imagined. Say goodbye to A/C and say hello to the green cooling alternative!



## Automatic damper doors

Powered by heavy-duty actuators, the insulated damper doors featured on AirScape Whole House Fans close tightly against a rubber gasket when the fan is off to provide a thermal barrier between the living space and attic. This way no attic air enters the living space, and no warm air leaks into and condenses in the attic.



## Capture the cool, quiet evening breeze

AirScape Whole House Fans are engineered for low noise and high efficiency - and are designed to run all night. This allows you to take advantage of the lowest outside temperatures of the day and achieve the maximum cooling effect, all while you sleep in peaceful comfort.



## Superior engineering & design

Rigorously tested to optimize airflow, sound, and efficiency, AirScape Whole House Fans reflect the time and thought put into them in their exceptional performance and effectiveness. Put simply, AirScape is the engineer's clear choice for whole house fans.

## Robust construction delivers maintenance free operation

AirScape Fans are proudly assembled in the USA and Canada with robust metal construction, industrial-grade components, and digital electronics. They offer reliable, worry-free operation season after season and are backed by a 3-year warranty with exceptional technical support.



## Easy installation & retrofit

Designed for 16" or 24" on-center ceiling joists or wall studs and equipped with 10' power cords, AirScape units can be easily installed in new or existing construction. Wireless control options remove the need to fish wires down the wall.



## Improve indoor air quality

AirScape Whole House Fans not only provide natural cooling, but they can also help remove unwanted fumes, dust, and odors from the living space - alleviating concerns about airborne health hazards. And, for those with allergies, we also offer specialized window screening that filters out 90% of common pollens. Now you can stay cool *and* breathe easy.

## Control options



All AirScape Whole House Fans come standard with a dual-speed decora-style wall switch. Other control options, exclusive to AirScape, offer the convenience of wireless operation and programmable automated functions.

**CALCULATORS**  
Determine your exact needs:  
[airscapefans.com/system-builder/whf-sizer.php](http://airscapefans.com/system-builder/whf-sizer.php)



## UTILITY REBATES

Find a rebate from your utility provider:  
[airscapefans.com/rebates](http://airscapefans.com/rebates)